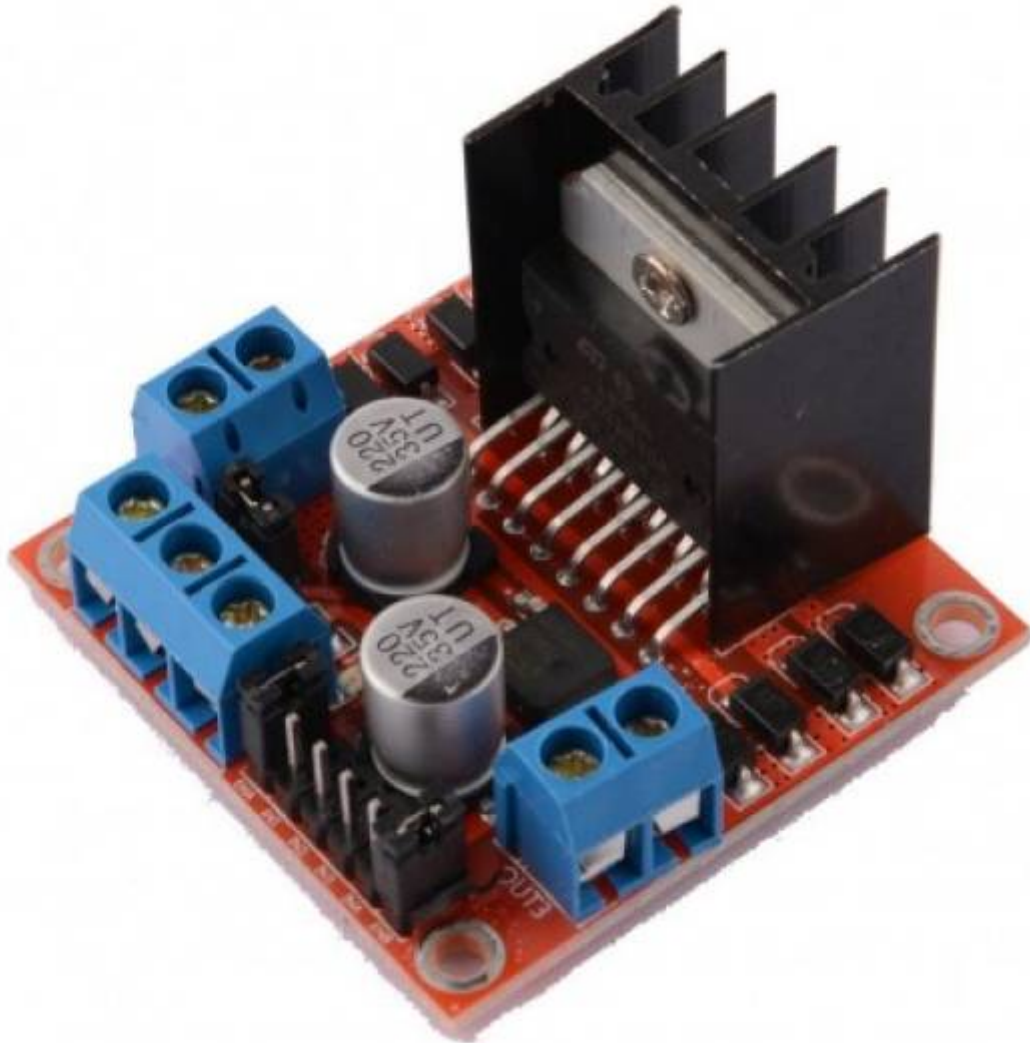
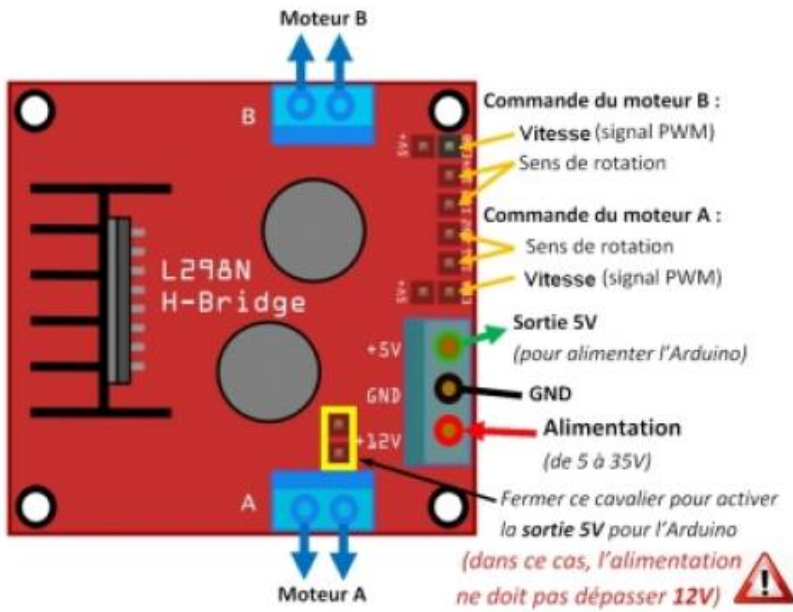


moteur pas à pas L298

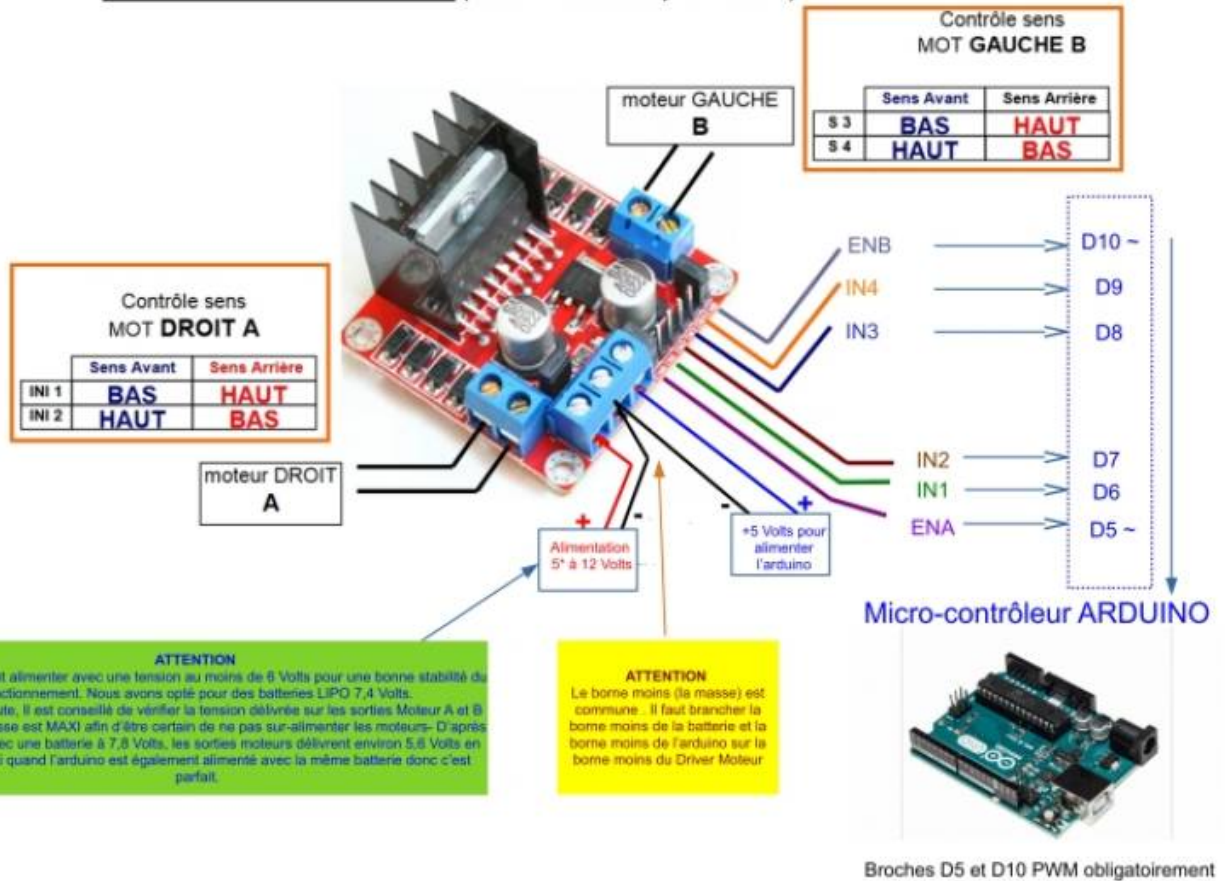
L298

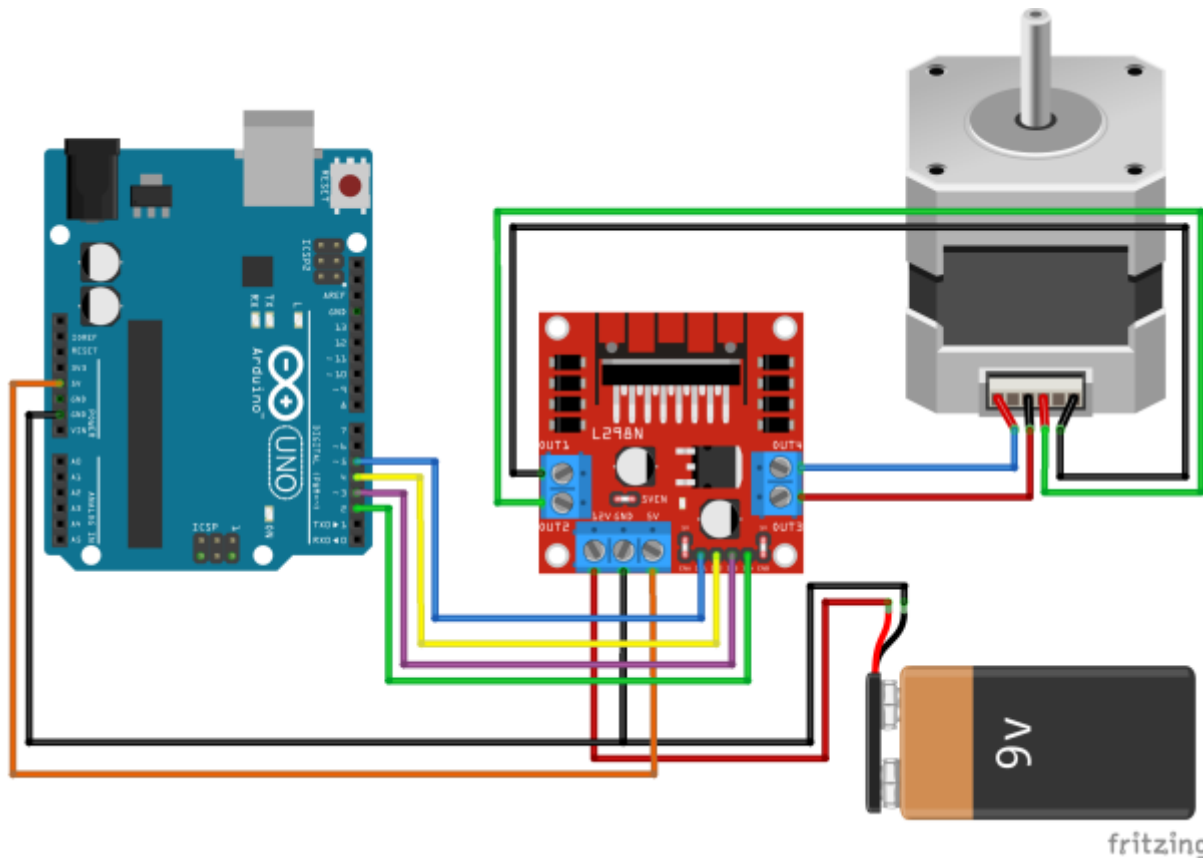


Programmer le Driver Moteur L298N (double pont en H)



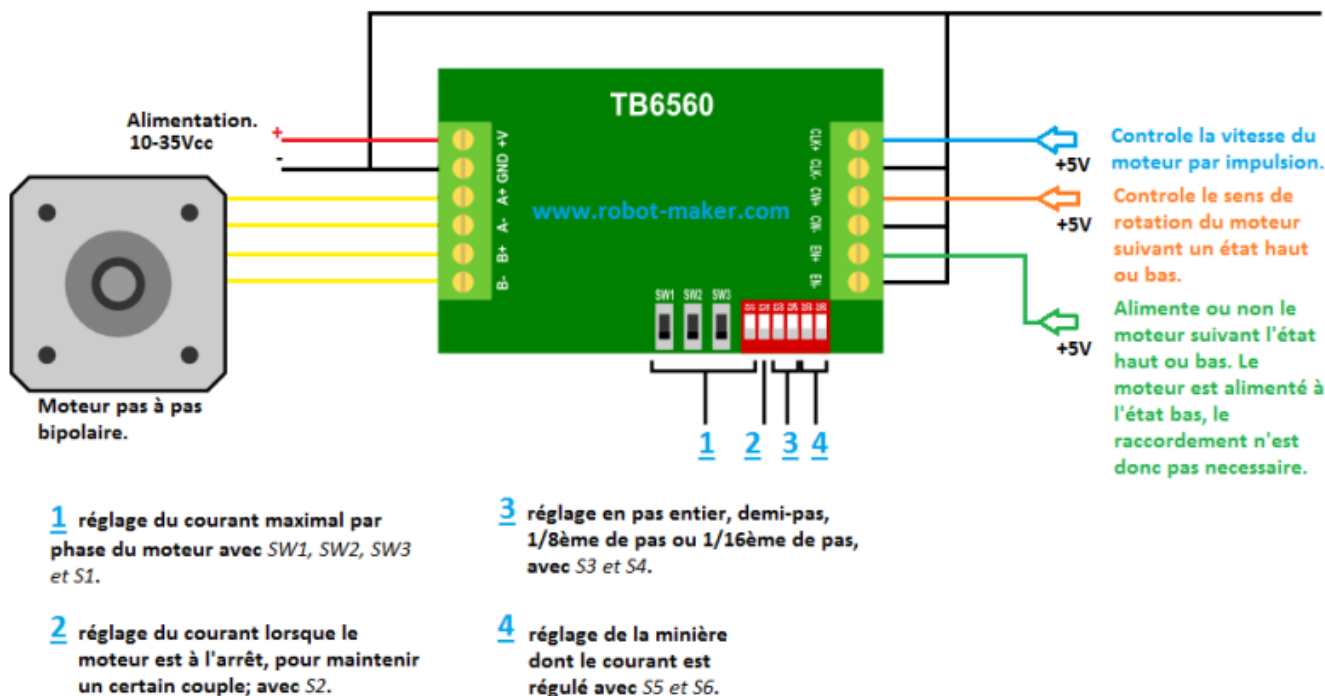
Carte de contrôle des moteurs (L298N – «double pont en H») :





fritzing

TB6560



Datasheet simplifié du TB6560

Last update: 2025/02/01 19:43 start:arduino:moteur:paspas <https://www.magenealogie.chanterie37.fr/www/fablab37110/doku.php?id=start:arduino:moteur:paspas&rev=1738435435>

From: <https://www.magenealogie.chanterie37.fr/www/fablab37110/> - **Castel'Lab le Fablab MJC de Château-Renault**

Permanent link: <https://www.magenealogie.chanterie37.fr/www/fablab37110/doku.php?id=start:arduino:moteur:paspas&rev=1738435435>

Last update: **2025/02/01 19:43**

